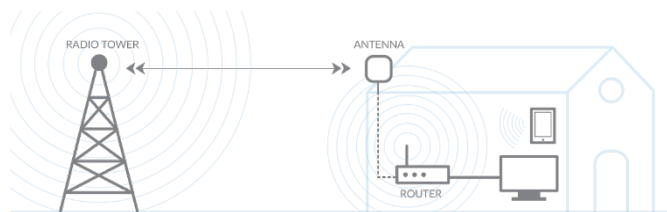


Internet via Fixed Radio Towers: Internet Papineau : 1-844-506-2110

Internet Papineau provides internet service to communities on a non-profit basis. Their sphere of operations include the Outaouais region, more specifically the MRC Papineau, municipalities of Ange-Gardien and Notre-Dame-de-la-Salette.

Internet Papineau offers an internet service via fixed radio towers. Radio waves are transmitted/received from these towers to any client who is within a certain distance and who has a direct line of sight with the fixed radio tower.



Installation :

- A direct line of sight with one of the terrestrial fixed radio towers is required. A first assessment of service feasibility is performed by phone using the address and a map of the area covered by the radio towers..
- Where service is possible, a technician is sent (at no cost or obligation) for an installation attempt.
- The technician measures signal strength at the address and, if the signal strength is good, installs an exterior dish of 10 to 12 inches.
- Make sure the dish is installed where it can be easily accessed (to clean off any snow) and ideally be sheltered from prevailing winds..
- The technician will install the cabling into the house to a router.
- This router can belong to the client or the technician can provide one at extra cost.

<https://www.ipapineau.net/> (French only)

Description of the service :

- The offered monthly packages go from 5GB for 25 dollars to Unlimited GB for 87 dollars (An "HD" film can consume 4GB)
- Data transmission speeds.
 - Data package download speeds are 10Mbps (ordinary film requires 3Mbps, an HD film requires 5Mbps, a 4K film requires 25Mbps).
 - Data upload speeds to the satellite are 3 Mbps.

<https://www.ipapineau.net/forfaits/> (French only)

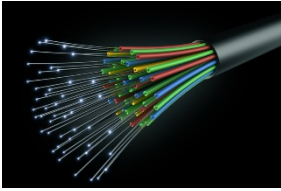
Facebook :

[https://www.facebook.com/ipapineau.net/?_tn_=-K-R&eid=ARBxq8LijzmoZaXS18CyusQCzz75y3gLkeRjm2RskNAGinMH4qUKChAqh5VwLlqIHJVncWG1831xwKH&fref=mentions&_xts__\[0\]=68.ARB87pAYuNcTdfVab_gPd_kWkrHv3AILWTsHhujIMm0aN1K_kL-o6YNIzZc7Ds4aDJSNzAlkRqYw9hdZontM-E6MZDyOJbTN6KiEYvpytXNw5czXai9XF10TTA4tnG0R2YnmX2zXOwuqk-LJKV-PcXYNKWI0ukhWbFv6BDkmuL-49vv6rgOVOKX6YcD_MzvltroXYbqLPZ4MRBhKNFbnzThxoXoYiWPPvoqNpFKiGzpo3PEOimkNRzPCuvT-zNUsIkoTENDNQ2NHA55tGxBcVh1r1xTE6i3HqgTxcBBWakQAoQXvXeRaJmMhoWrIA7INTIkChJ6BKXpruCxASpBNJnqXainSf_z5a_-w](https://www.facebook.com/ipapineau.net/?_tn_=-K-R&eid=ARBxq8LijzmoZaXS18CyusQCzz75y3gLkeRjm2RskNAGinMH4qUKChAqh5VwLlqIHJVncWG1831xwKH&fref=mentions&_xts__[0]=68.ARB87pAYuNcTdfVab_gPd_kWkrHv3AILWTsHhujIMm0aN1K_kL-o6YNIzZc7Ds4aDJSNzAlkRqYw9hdZontM-E6MZDyOJbTN6KiEYvpytXNw5czXai9XF10TTA4tnG0R2YnmX2zXOwuqk-LJKV-PcXYNKWI0ukhWbFv6BDkmuL-49vv6rgOVOKX6YcD_MzvltroXYbqLPZ4MRBhKNFbnzThxoXoYiWPPvoqNpFKiGzpo3PEOimkNRzPCuvT-zNUsIkoTENDNQ2NHA55tGxBcVh1r1xTE6i3HqgTxcBBWakQAoQXvXeRaJmMhoWrIA7INTIkChJ6BKXpruCxASpBNJnqXainSf_z5a_-w)

Email :

info@ipapineau.net

Coming in the Future : Internet Papineau is currently working to implement a fibre optic internet service. Fibre optics allow the highest internet speeds. Fibre optic internet agreements are being concluded with municipalities and negotiations are ongoing with Hydro Quebec to run fibre optic cabling on their posts.



Internet via satellite : XPLORNET 1-866-710-1624

When terrestrial internet solutions are not available, it is possible to access the internet via satellite.



Xplornet offers satellite Internet to provide service in even the most remote areas of the country where terrestrial options (Cable or Communication Tower) are not available.

Installation

- The dish must have an unobstructed line of sight towards the South (273 degrees) with an elevation above the horizon of 23 degrees.
- Make sure the dish is installed where it can be easily accessed (to clean off any snow) and ideally be sheltered from prevailing winds.
- The complete installation is taken care of by an authorized distributor and includes: Dish installation, cabling and connections to the receiver with PVR option.

<https://www.xplornet.com/support/internet/what-to-expect-during-your-internet-installation-appointment-2/>

Description of the service :

- Typically, internet via satellite is the most expensive and slowest of options.
- Strong storms can cause interruptions of service (loss of signal)..
- The offered monthly packages go from 100GB for 100 dollars to 175GB for 185 dollars (An “HD” film can consume 4GB)
- Data transmission speeds.
 - Data package download speeds from the satellite are either 10Mbps or 25Mbps. (ordinary film requires 3Mbps, an HD film requires 5Mbps, a 4K film requires 25Mbps).
 - Data upload speeds to the satellite are 1 Mbps for all packages.

<https://www.xplornet.com/support/billing-account/customer-package-upgrade-add-ons/packages-for-current-customers-satellite/>

Facebook :

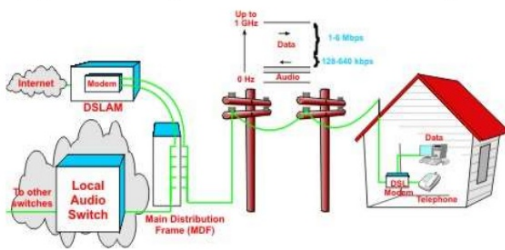
<https://www.facebook.com/Xplornet>

Youtube :

<https://www.youtube.com/xplornetonline>

Internet via telephone landline; TELEBEC 1 888-835-3232

Asymmetric Digital Subscriber Line (ADSL):



Telebec offers landline internet services.

Of Note! This internet service is available only up to a distance of 5 kilometres from the center of Duhamel and therefore is not available to residents who live on lac Gagnon.

Installation :

- Must have a Telebec landline or have access to a Telebec landline installation.
- Must not be further than 5 kilometres of landline distance away from the local Telebec distribution central.
- Installation provided by an authorised installer and includes : Installation of the wi-fi modem inside the residence and installation of the wiring from the post to the house.

Description of the service :

- Typically the telephone landline (ADSL) is the slowest of the internet services.
- Speed of data transmission :
 - Download speeds of 5 to 12Mbps. (ordinary film requires 3Mbps, an HD film requires 5Mbps, a 4K film requires 25Mbps)
 - Upload speeds of 1 Mbps.
- Unlimited data plans run from \$78.95 to \$85.95 dollars per month.

<https://www.telebec.com/en/internet/forfaits>